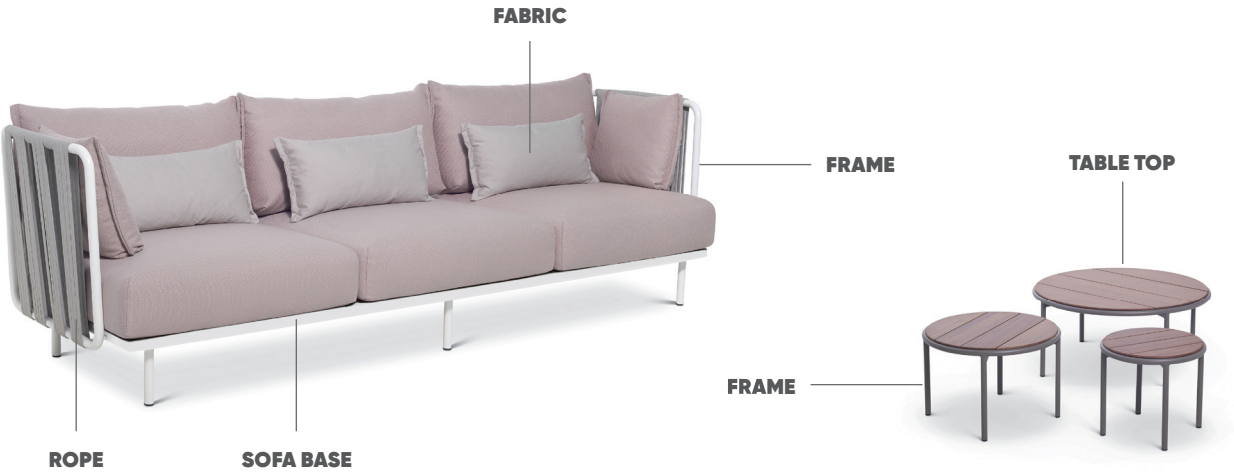


**Finishes TEJA collection**  
by La Mamba Design Studio

bivaq



**ALUMINUM FRAME PAINTING COLOR**

Aluminum is an environmental friendly, light and tough metal with an excellent strength to weight ratio and corrosion resistance, making it an ideal material for outdoor furniture. By powder coating we give to the aluminum an advanced method of applying protective, resistance to chemicals, corrosion, UV weathering and decorative coating. Choose your Bivaq furniture finish among all these painting colors:

10- white text	11- ivory text	29- stone	39- beige grey
23- antracita	34- grafito	56- olive brown	26- brown cobre
55- coral red	16- maroon oxide	52- mint turquoise	12- cement green
15- olive green	24- grey blue	49- steel blue	

---

**SOFA BASE**

Aluminum

Same colors  
as ALUMINUM  
FRAME  
PAINTING  
COLORS above.

---

**ROPE**

The navy rope we use in this collection, is made with polyester thread in the outside and nylon cord in the inside, in the way to ensure the highest durability, resistance against climatic agent and also good elasticity and quick drying.



13- grey taupe



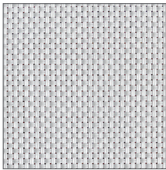
14- terra brown

---

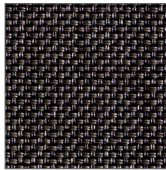
**FABRIC**

**Vinytex fabrics**

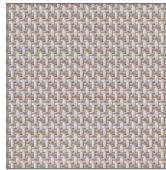
Vinytex is a generic term for a woven, open-mesh fabric made from a vinyl coated, high strength polyester yarn. Combines a textile appearance with the extreme weather resistant properties ensuring lasting colour with no sag effect. This fabric is hard wearing, wipeable, quick-drying and resistant to fading, mildew and wear & tear under even the most severe weather conditions.



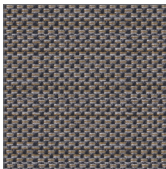
08- white pearl B



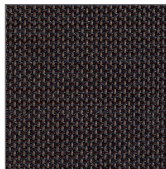
05- tobacco B



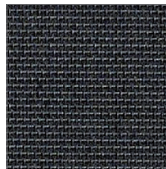
61- stone beige D



52- grafito beige D



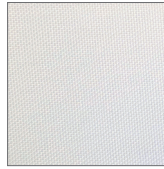
63- eden tobacco D



77- eden black D

## Acrylic fabrics

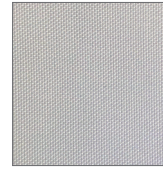
The acrylic fabrics that Bivaq uses in its collections are manufactured with solution dyed acrylic fiber, a process which adds the pigments before the fibers are extruded, this allows the color to be mixed into the solution thoroughly, bringing the color all the way through the fiber once it is extruded, creating a colorfast fabric much stronger than that obtained by dyeing the thread. As a result, we have a fabric that is less vulnerable to UV radiation and the guarantee that its colors will remain permanent and bright for many years. Other characteristics of these fabrics are that they are very soft touch, water repellent, stain proof, do not fade in the sun, hardwearing and mould resistant.



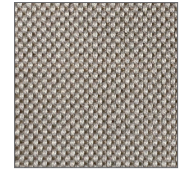
47- pan white B



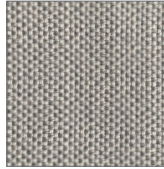
103- wabi ecru C



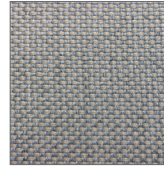
48- pan bone B



87- heather chalk B



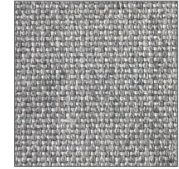
83- sack sand D



95- bon chalk linen C



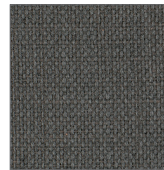
104- wabi beige C



32- grey pearl B



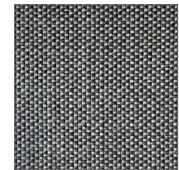
31- toast B



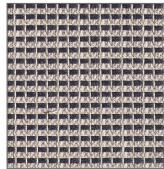
100- wabi basalto C



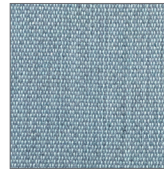
42- beige carbon B



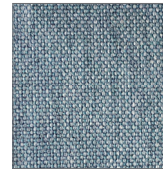
89- sack carbon D



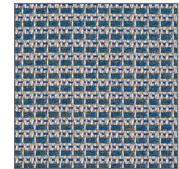
74- marconi antracita B



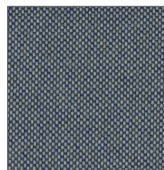
93- can bali blue C



43- blue grey B



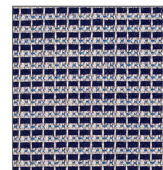
75- marconi light blue B



06- sack cloudy blue D



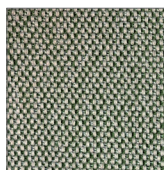
94- terry navy blue C



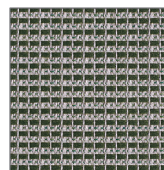
71- marconi marine blue B



92- can valley green C



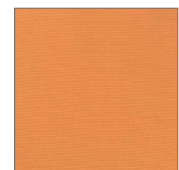
46- sack olive green D



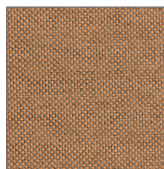
72- marconi green B



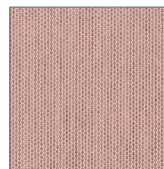
90- can yellow sun C



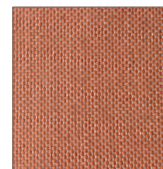
91- sol mustard A



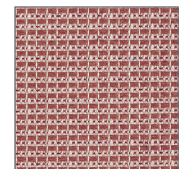
101- pan tangerine B



53- blush peach B



85- peach flamingo B



73- marconi indian red B

---

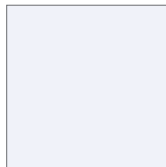
## TABLE TOP

### Aluminum

Same colors  
as ALUMINUM  
FRAME  
PAINTING  
COLORS above.

### HPL Compact top

HPL Compact is a high pressure structural laminate, built up from multiple layers of wood-based fibers impregnated with thermosetting resins and surface layers on both sides, having decorative colors or designs. Thicknesses from 10mm to 12mm it is particularly suited to use in high humidity, high impact areas. Compact is impressively strong and damage resistant and has remarkable structural stability weather and light protecting properties.



50- white



51- antracita



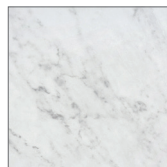
54- brown

### Dekton®

Dekton is made from a mixture of inorganic raw materials found in glass, porcelain tile and natural quartz. The process by which it is made combines technologies from these three industries, resulting in a proprietary new advancement called Particle Sintering Technology (PST). Some of the more prominent characteristics of Dekton are: Highly Resistant to (UV) Light, Suitable for Outdoor use, non-porous Surface, temperature Resistant, High Mechanical Resistance, color stability, low maintenance, non-combustibility, dimensional stability.



78- danae



106- marina



105- argentium



107- sirocco



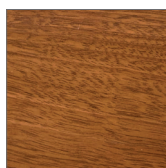
82- keranium



04- domoos

### Iroko

Iroko is an intertropical African tree that is characterized by it is durable timber which does not require any preservation treatment and therefore offers economic and ecological advantages that make it an ideal material for outdoor use. Moreover, iroko has an interesting potential in carbon dioxide sequestration and soil improvement. Also is a highly durable hardwood that is both insect and rot resistant, making it the ideal type of wood for outdoor furniture products.



70- iroko