

# Finishes NAK collection

by Andrés Bluth

bivaq



## ALUMINUM FRAME PAINTING COLOR

Aluminum is an environmental friendly, light and tough metal with an excellent strength to weight ratio and corrosion resistance, making it an ideal material for outdoor furniture. By powder coating we give to the aluminum an advanced method of applying protective, resistance to chemicals, corrosion, UV weathering and decorative coating. Choose your Bivaq furniture finish among all these painting colors:

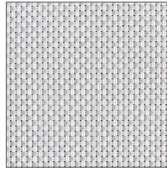


---

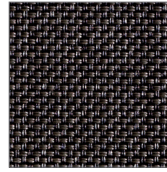
## FABRIC

### Vinytex fabrics

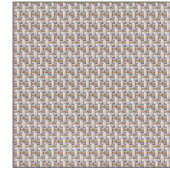
Vinytex is a generic term for a woven, open-mesh fabric made from a vinyl coated, high strength polyester yarn. Combines a textile appearance with the extreme weather resistant properties ensuring lasting colour with no sag effect. This fabric is hard wearing, wipeable, quick-drying and resistant to fading, mildew and wear & tear under even the most severe weather conditions.



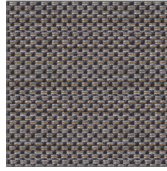
08- white pearl B



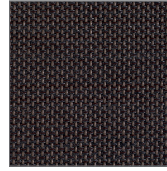
05- tobacco B



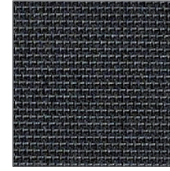
61- stone beige D



52- grafito beige D



63- eden tobacco D



77- eden black D

### Acrylic fabrics

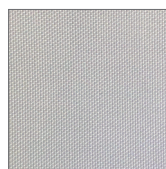
The acrylic fabrics that Bivaq uses in its collections are manufactured with solution dyed acrylic fiber, a process which adds the pigments before the fibers are extruded, this allows the color to be mixed into the solution thoroughly, bringing the color all the way through the fiber once it is extruded, creating a colorfast fabric much stronger than that obtained by dyeing the thread. As a result, we have a fabric that is less vulnerable to UV radiation and the guarantee that its colors will remain permanent and bright for many years. Other characteristics of these fabrics are that they are very soft touch, water repellent, stain proof, do not fade in the sun, hardwearing and mould resistant.



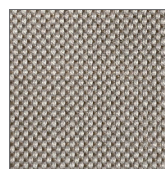
47- pan white B



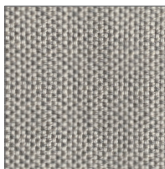
103- wabi ecru C



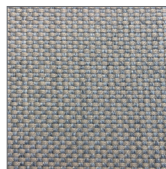
48- pan bone B



87- heather chalk B



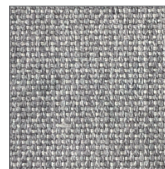
83- sack sand D



95- bon chalk linen C



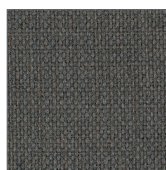
104- wabi beige C



32- grey pearl B



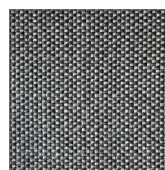
31- toast B



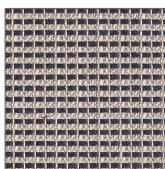
100- wabi basalto C



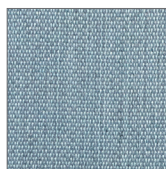
42- beige carbon B



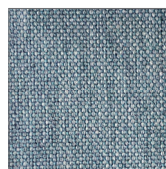
89- sack carbon D



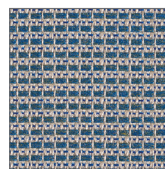
74- marconi antracita B



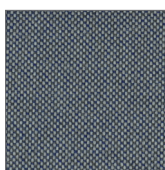
93- can bali blue C



43- blue grey B



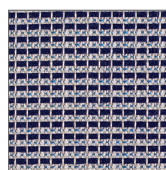
75- marconi light blue B



06- sack cloudy blue D



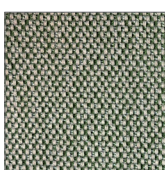
94- terry navy blue C



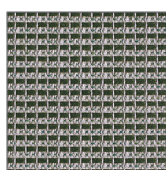
71- marconi marine blue B



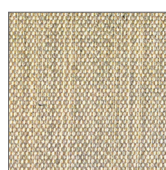
92- can valley green C



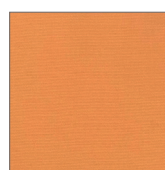
46- sack olive green D



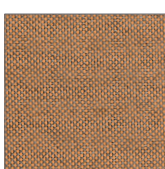
72- marconi green B



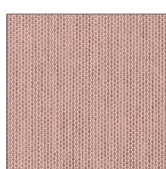
90- can yellow sun C



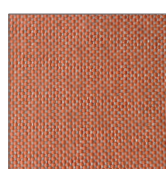
91- sol mustard A



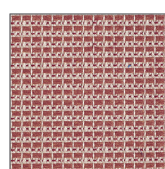
101- pan tangerine B



53- blush peach B



85- peach flamingo B



73- marconi indian red B